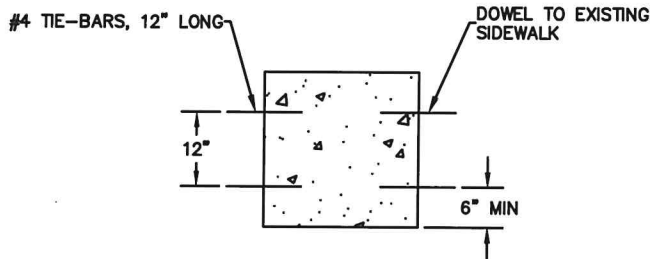
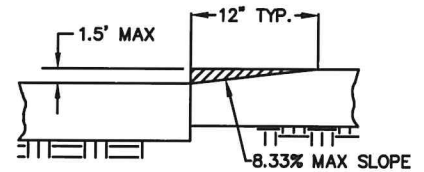


SIDEWALK REPAIR PLAN
N.T.S.



TYPICAL DOWEL
N.T.S.



SECTION A-A
N.T.S.

NOTES:

1. SIDEWALK REPAIRS ARE REQUIRED BY THE COUNTY FOR HORIZONTAL AND VERTICAL DISPLACEMENT $\frac{1}{2}$ " OR GREATER. GENERAL SURFACE DETERIORATION AND OTHER CONDITIONS MAY ALSO REQUIRE SIDEWALK REPAIRS.
2. SAWCUT ALL SIDEWALK SECTIONS TO BE REMOVED. SAWCUT TO BE AT NEAREST JOINT.
3. REPAIR SIDEWALK AND DRIVEWAYS USING ALL APPLICABLE COUNTY STANDARDS.
4. REPLACE ALL SCORE LINES PER EXISTING SCORING PATTERNS.
5. CROSSING EXPANSION JOINTS IS NOT ALLOWED. IF REPAIRS ABUT EXISTING EXPANSION JOINT ON BOTH SIDES, FORM/POUR SECTION MONOLITHICALLY AND REPLACE EXPANSION JOINT WITH SCORE LINE(S).
6. GRINDING SHALL ONLY BE ALLOWED BY PRIOR APPROVAL. GRINDING REPAIR SECTION SHALL NO EXCEED 1.5" VERTICALLY. SEE SECTION A-A.
7. GRINDING REPAIR SECTION SURFACE FINISH SHALL CONFORM TO THE NON-SLIP COEFFICIENT OF FRICTION PER CALTRANS STANDARD SPECIFICATION SECTION 40. THIS CAN BE ACHIEVED BY ROUGHING THE SURFACE WITH A SAW-BLADE OR OTHER APPROVED METHOD.
8. WHEN TREE ROOTS ARE IN CONFLICT WITH THE REPLACEMENT OF SIDEWALKS (I.E. ROOTS ARE IN THE SIDEWALK SECTION), ROOT INSPECTION BY THE COUNTY ARBORIST IS REQUIRED BEFORE CUTTING AND/OR REMOVING ANY ROOTS.
9. EPOXY 12-INCH LONG #4 REBAR WITH 6-INCH EMBEDMENT AT 12-INCH ON CENTER WHEN ADJOINING CONCRETE IS NOT POURED MONOLITHICALLY.

YUBA COUNTY
DEPARTMENT OF PUBLIC WORKS
TYPICAL SIDEWALK &
DRIVEWAY REPAIR
(BY PROPERTY OWNER)

Donnell Stearns
APPROVED BY:

7/1/22
DATE: